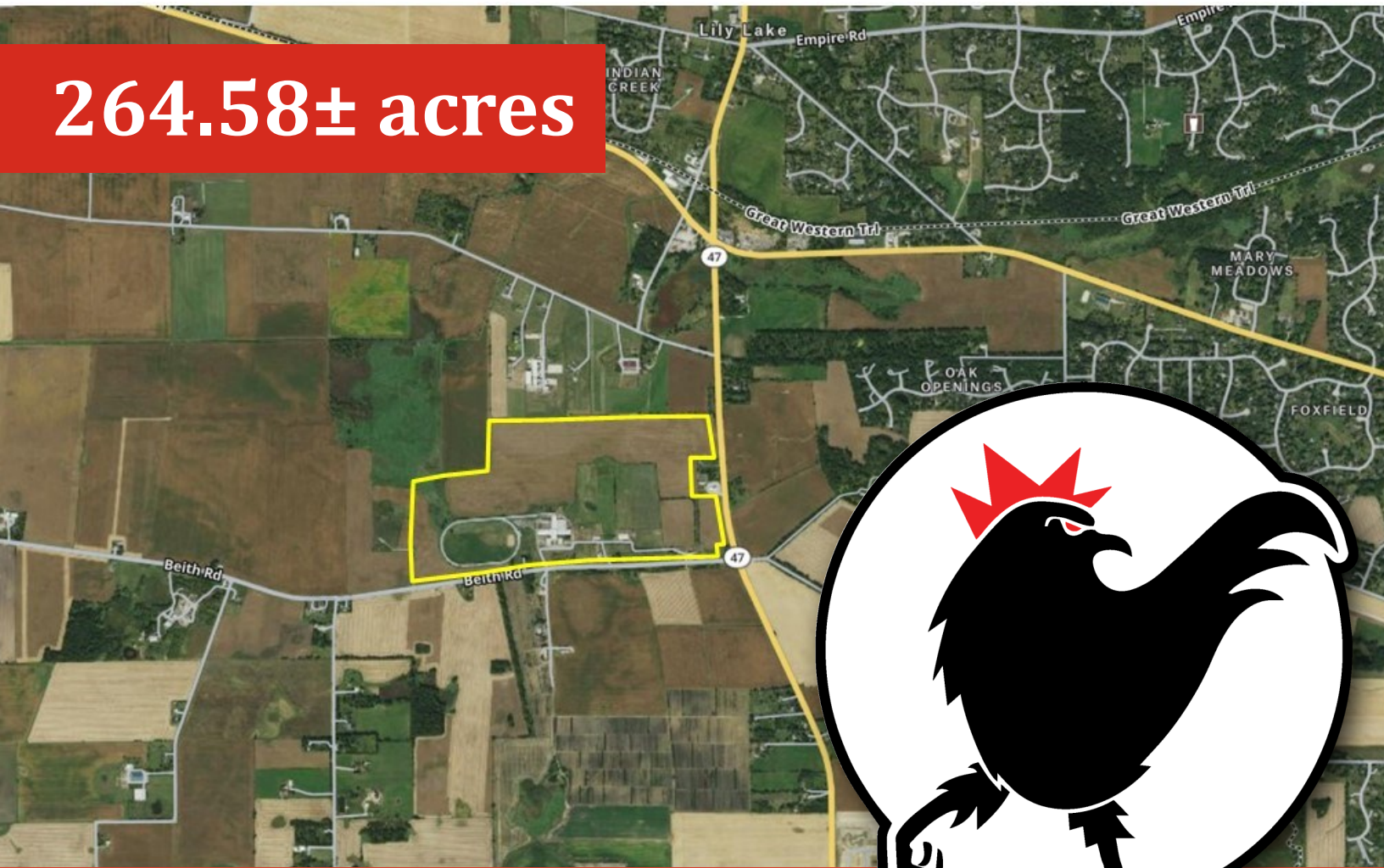


ROOSTER AG

REAL ESTATE

Kane County, IL

264.58± acres



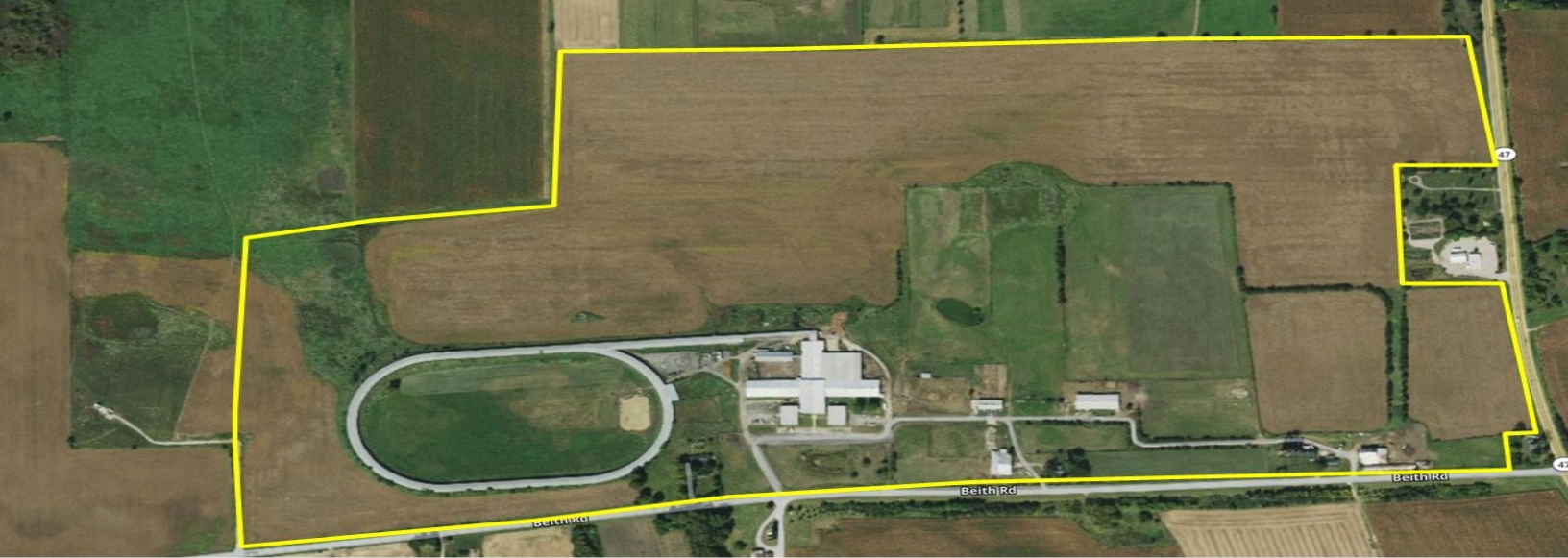
\$19,950 Per Acre

ROOSTER AG' REALTY

1100 S. County Line Rd
PO Box 297
Maple Park, IL 60151

JOE LUDWIG

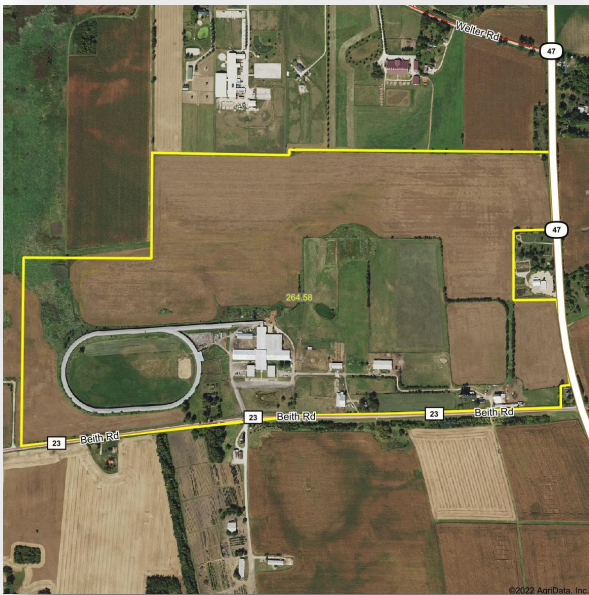
Broker
Email: roosteragrealty.com
Phone: 630.774.5887



About the Property

The Hondo Farm is 264.58± acres located in Section 19, Campton Township & Section 24, Virgil Township, Kane County, IL

GROSS ACRES:	264.58±
EST. REAL ESTATE TAX:	\$30,401.86
PRICE:	\$19,950 per acre



The 264.58 acre Hondo Farm has 3 houses with farm buildings, a office, one large building. Rental income from homes, buildings and 198+/- tillable acres of great soils! Come check this project out. It is a rare opportunity!



scan code to the left to view aerial drone footage of this property

ROOSTER AG' REALTY

1100 S. County Line Rd
PO Box 297
Maple Park, IL 60151

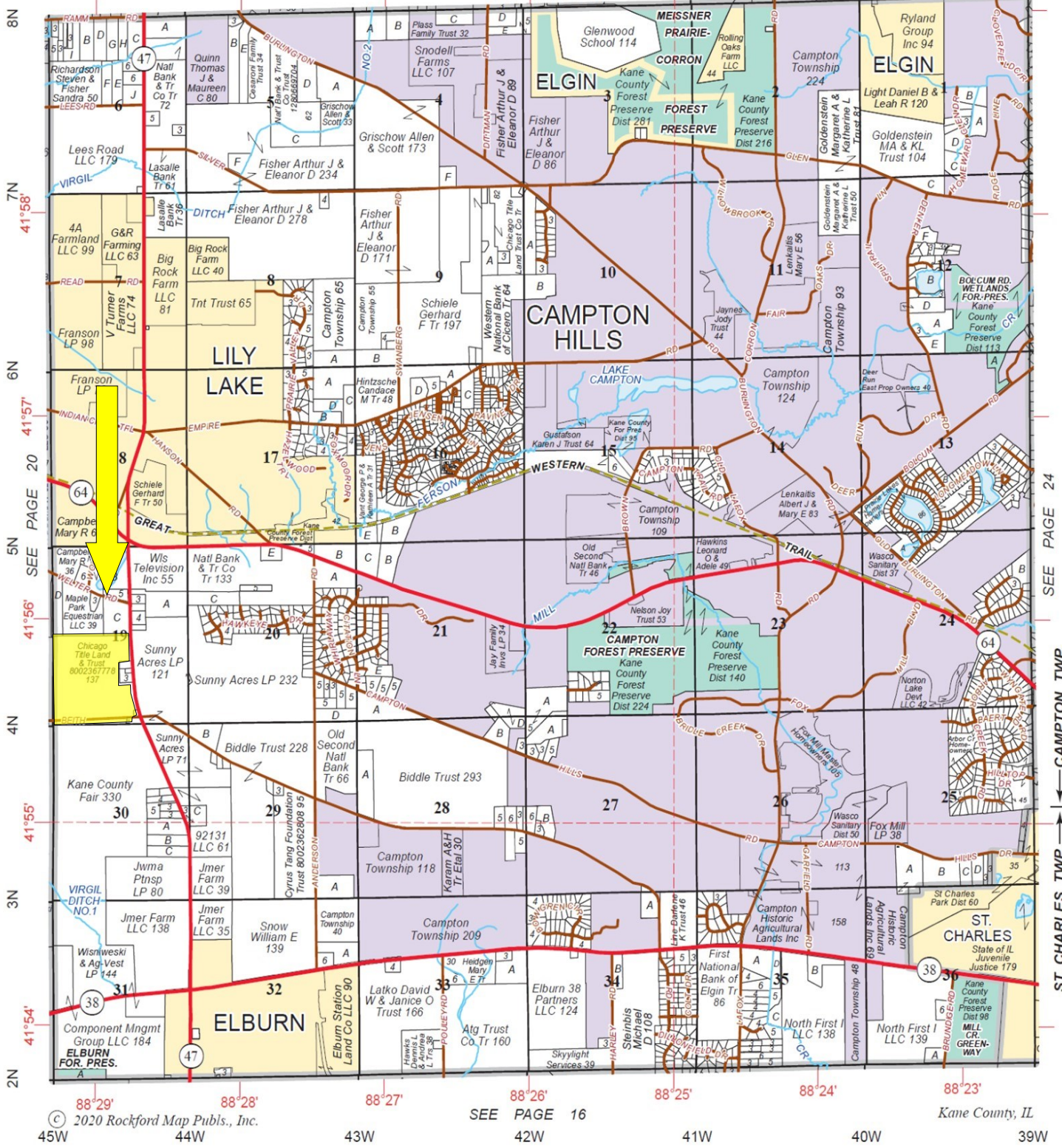


JOE LUDWIG

Broker
Email: roosteragrealty.com
Phone: 630.774.5887

CAMPTON WEST ST. CHARLES T.40N.-R.7E.

SEE PAGE 28



© 2020 Rockford Map Pubs., Inc.

SEE PAGE 16

Kane County, IL

ROOSTER AG' REALTY
 1100 S. County Line Rd
 PO Box 297
 Maple Park, IL 60151



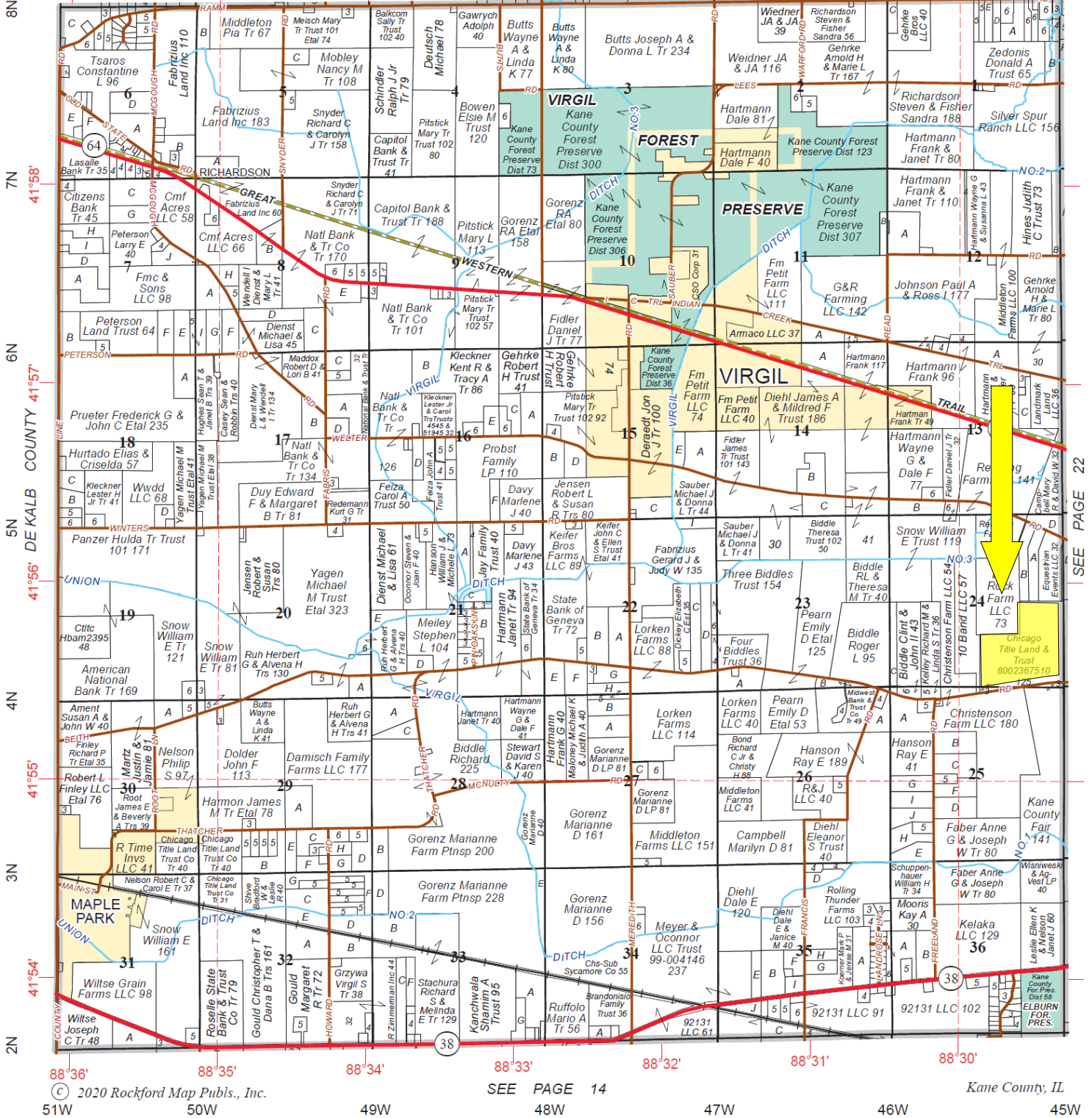
JOE LUDWIG
 Broker
 Email: roosteragrealty.com
 Phone: 630.774.5887

Refer to page 42 for keyed parcels

VIRGIL

T.40N.-R.6E.

SEE PAGE 26



© 2020 Rockford Map Publs., Inc.
 51W 50W 49W 48W 47W 46W 45W

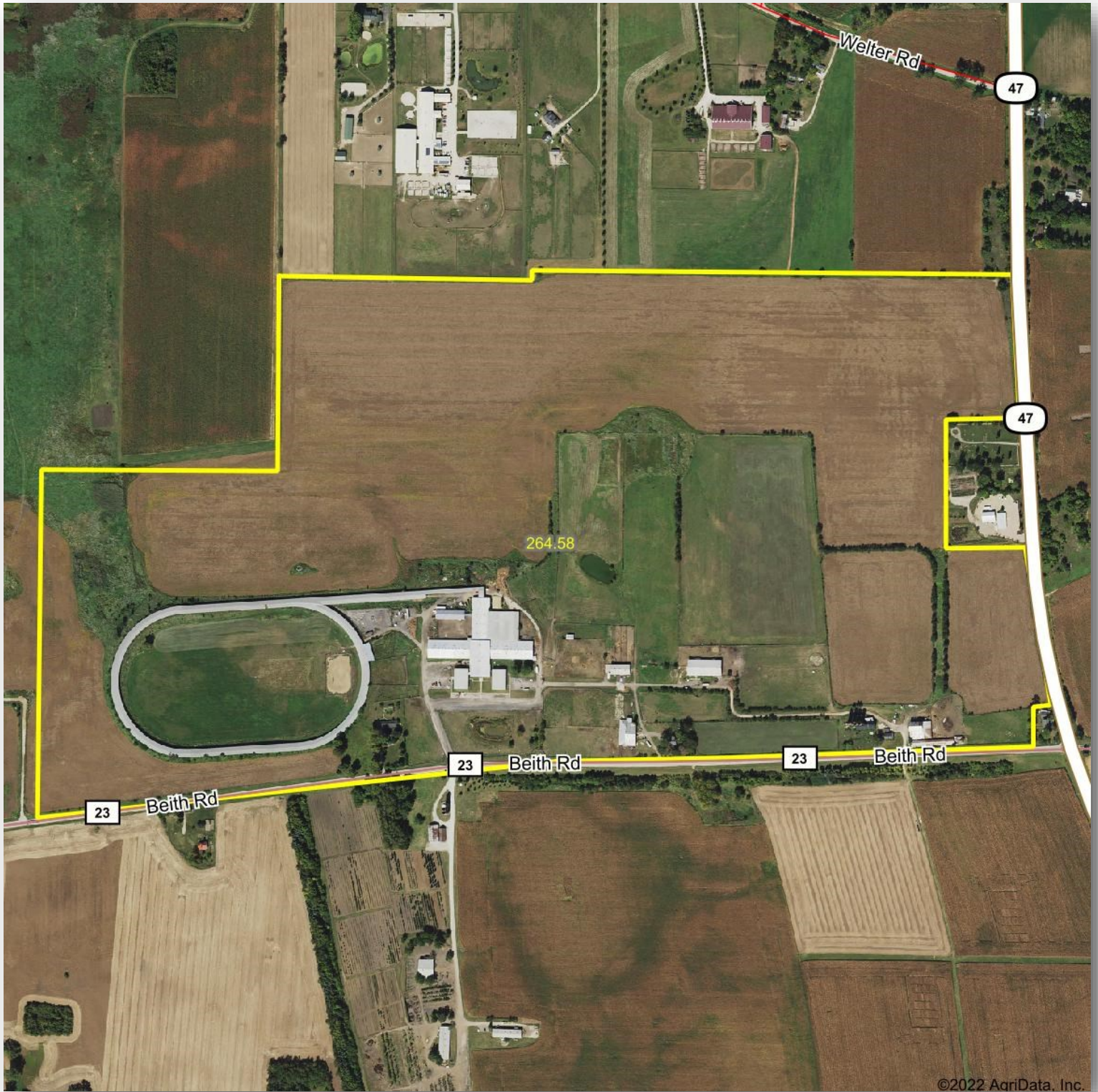
SEE PAGE 14

Kane County, IL

ROOSTER AG' REALTY
 1100 S. County Line Rd
 PO Box 297
 Maple Park, IL 60151



JOE LUDWIG
 Broker
 Email: roosteragrealty.com
 Phone: 630.774.5887



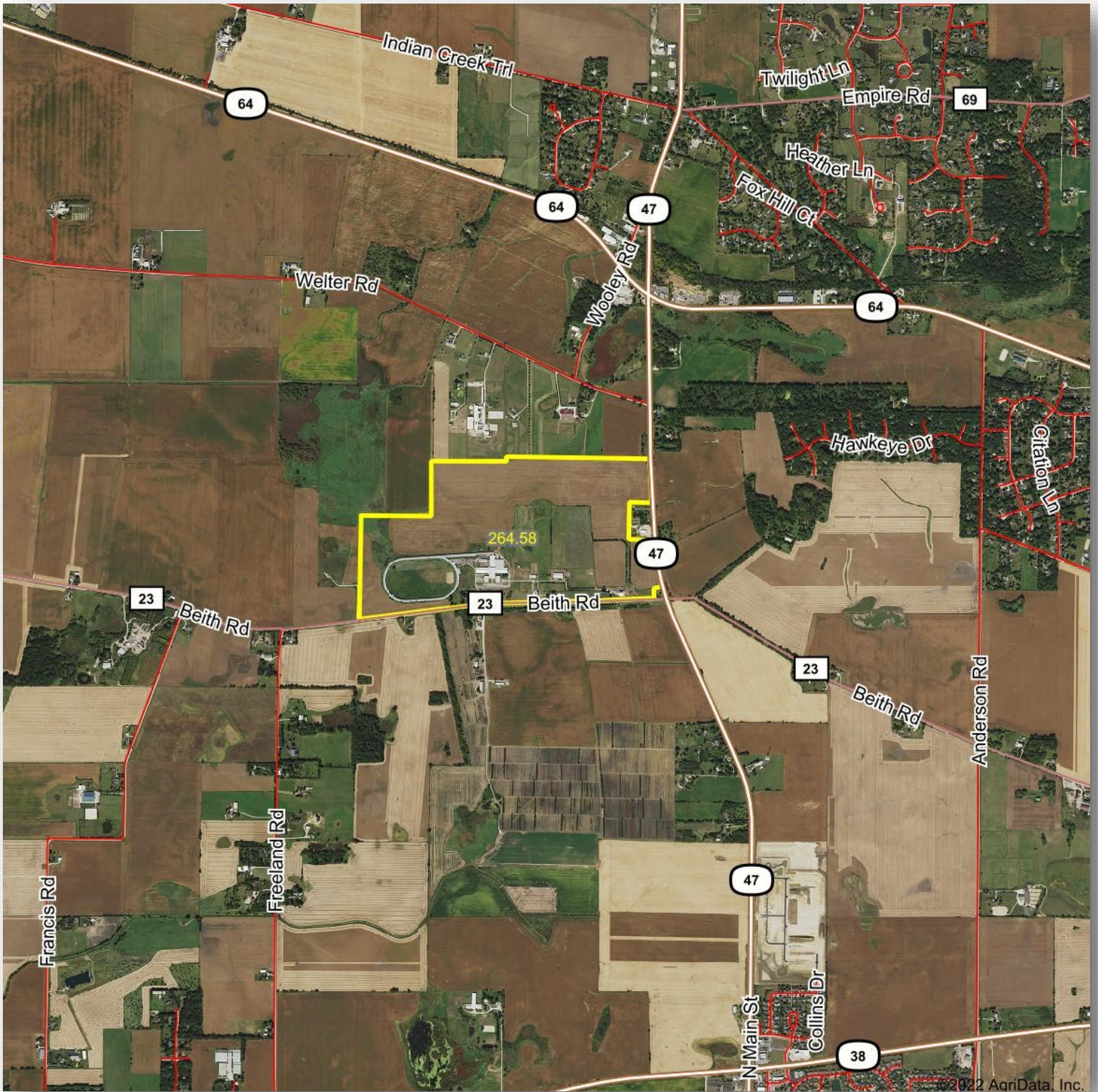
ROOSTER AG' REALTY

1100 S. County Line Rd
PO Box 297
Maple Park, IL 60151



JOE LUDWIG

Broker
Email: roosteragrealty.com
Phone: 630.774.5887



ROOSTER AG' REALTY

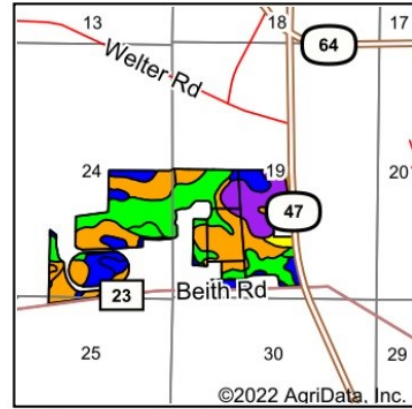
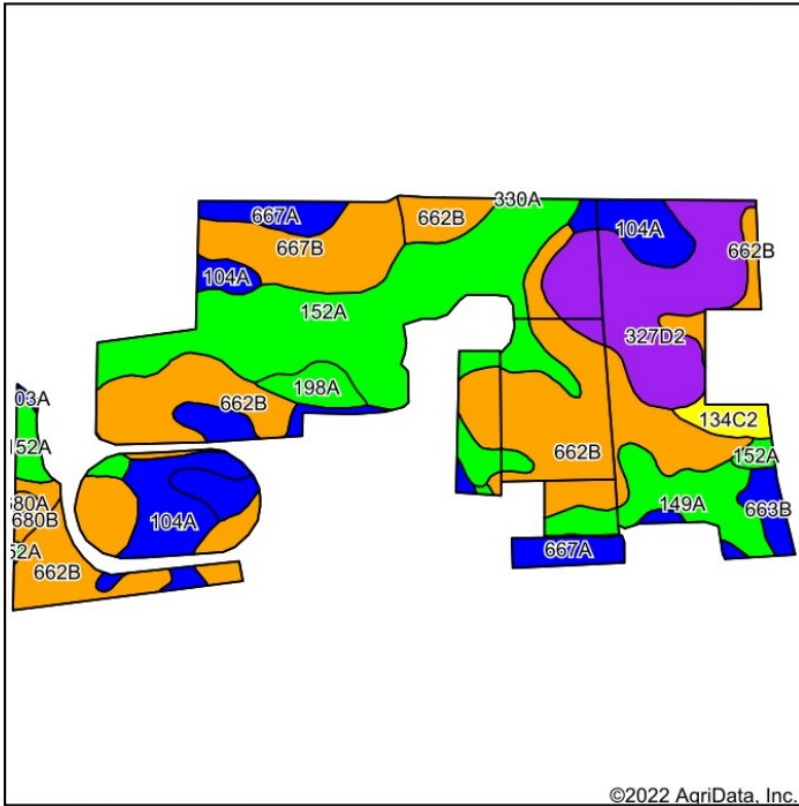
1100 S. County Line Rd
PO Box 297
Maple Park, IL 60151



JOE LUDWIG

Broker
Email: roosteragrealty.com
Phone: 630.774.5887

Soils Map



State: Illinois
 County: Kane
 Location: 24-40N-6E
 Township: Virgil
 Acres: 198.39
 Date: 9/27/2022



Soils data provided by USDA and NRCS.

Code	Soil Description	Acres	Percent of field	Il. State Productivity Index Legend	Corn Bu/A	Soybeans Bu/A	Crop productivity index for optimum management
**662B	Barony silt loam, 2 to 5 percent slopes	62.04	31.3%		**170	**52	**124
152A	Drummer silty clay loam, 0 to 2 percent slopes	45.83	23.1%		195	63	144
**327D2	Fox loam, 6 to 12 percent slopes, eroded	24.69	12.4%		**139	**45	**101
104A	Virgil silt loam, 0 to 2 percent slopes	16.35	8.2%		182	56	132
667A	Kaneville silt loam, 0 to 2 percent slopes	14.49	7.3%		178	55	128
**667B	Kaneville silt loam, 2 to 5 percent slopes	12.83	6.5%		**176	**54	**127
149A	Brenton silt loam, 0 to 2 percent slopes	10.96	5.5%		195	60	141
198A	Elburn silt loam, 0 to 2 percent slopes	3.29	1.7%		197	61	143
**134C2	Camden silt loam, 5 to 10 percent slopes, eroded	2.81	1.4%		**154	**47	**111
**663B	Clare silt loam, 2 to 5 percent slopes	2.71	1.4%		**180	**56	**133
**680B	Campton silt loam, 2 to 5 percent slopes	1.63	0.8%		**162	**50	**118
680A	Campton silt loam, 0 to 2 percent slopes	0.47	0.2%		164	50	119
103A	Houghton muck, 0 to 2 percent slopes	0.29	0.1%		175	57	130
Weighted Average					175.5	54.9	128

Table: Optimum Crop Productivity Ratings for Illinois Soil by K.R. Olson and J.M. Lang, Office of Research, ACES, University of Illinois at Champaign-Urbana. Version: 1/2/2012 Amended Table S2 B811
 Crop yields and productivity indices for optimum management (B811) are maintained at the following NRES web site: <http://soilproductivity.nres.illinois.edu/>
 ** Indexes adjusted for slope and erosion according to Bulletin 811 Table S3

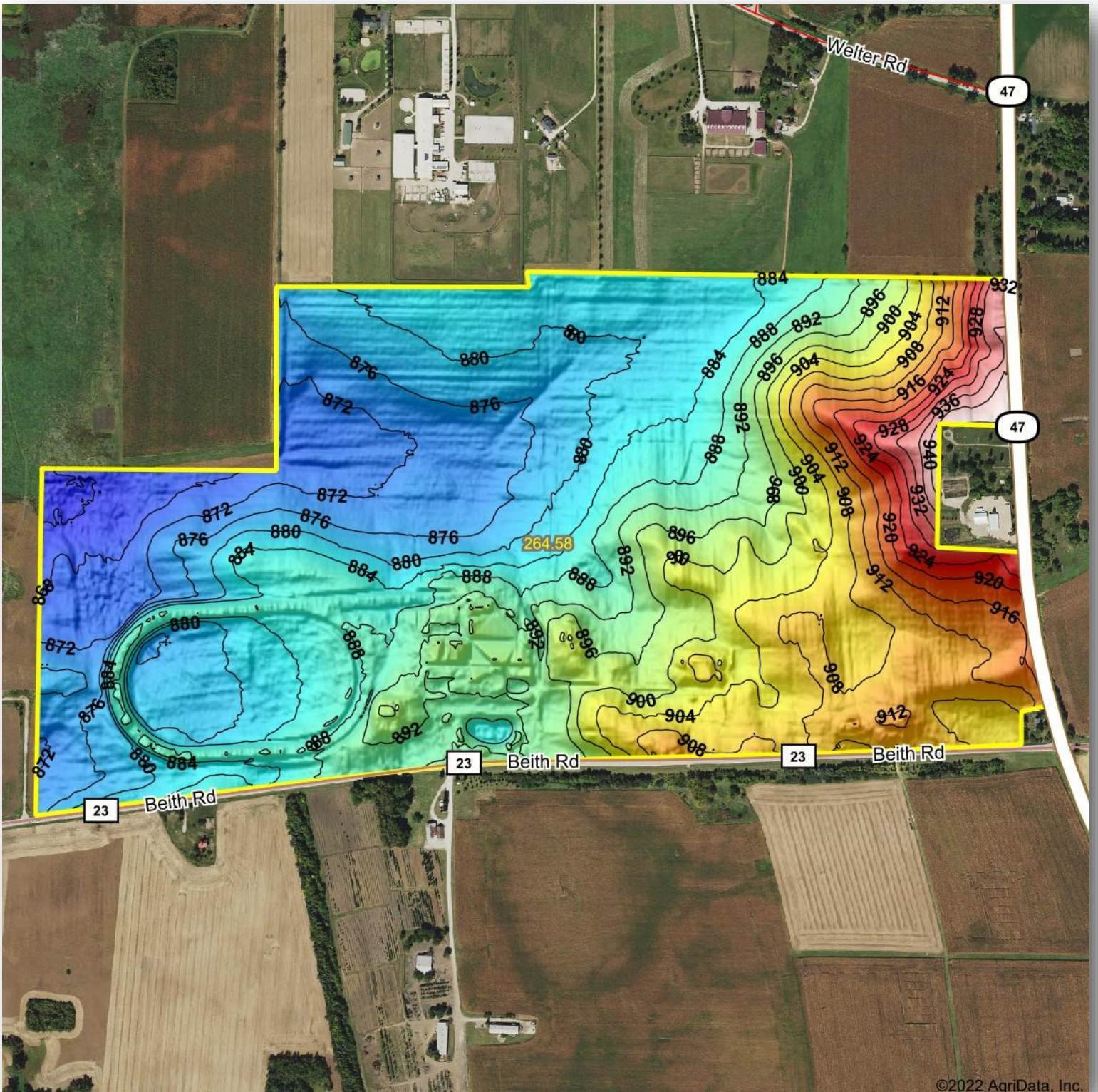
ROOSTER AG' REALTY

1100 S. County Line Rd
 PO Box 297
 Maple Park, IL 60151



JOE LUDWIG

Broker
 Email: roosteragrealty.com
 Phone: 630.774.5887



ROOSTER AG' REALTY

1100 S. County Line Rd
 PO Box 297
 Maple Park, IL 60151



JOE LUDWIG

Broker
 Email: roosteragrealty.com
 Phone: 630.774.5887