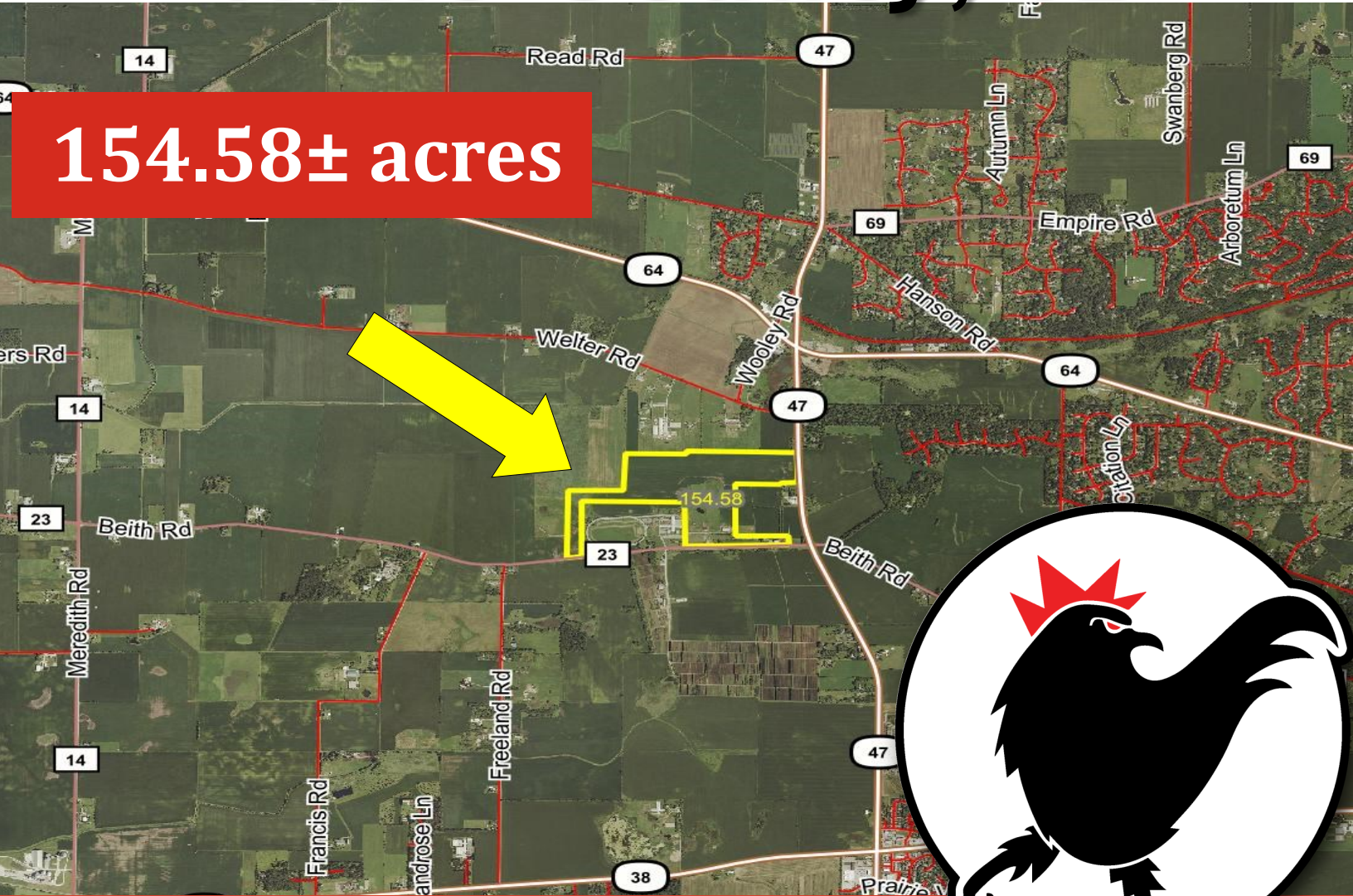


ROOSTER AG

REAL ESTATE

Kane County, IL

154.58± acres



\$21,600 Per Acre

ROOSTER AG' REALTY

1100 S. County Line Rd
PO Box 297
Maple Park, IL 60151

JOE LUDWIG

Broker
Email: roosteragrealty.com
Phone: 630.774.5887



About the Property

The Hondo Farm is 154.58± acres located in Section 19, Campton Township & Section 24, Virgil Township, Kane County, IL



GROSS ACRES:	154.58±
TILLABLE ACRES:	130.58±
EST. REAL ESTATE TAX:	\$13,002.00
PRICE:	\$21,600 per acre

The 154.58 acre Hondo Farm has 2 farmhouses, 2 horse barns and 2 buildings and 130.58+/- tillable acres of great soils!

Come check this rare equine facility out!

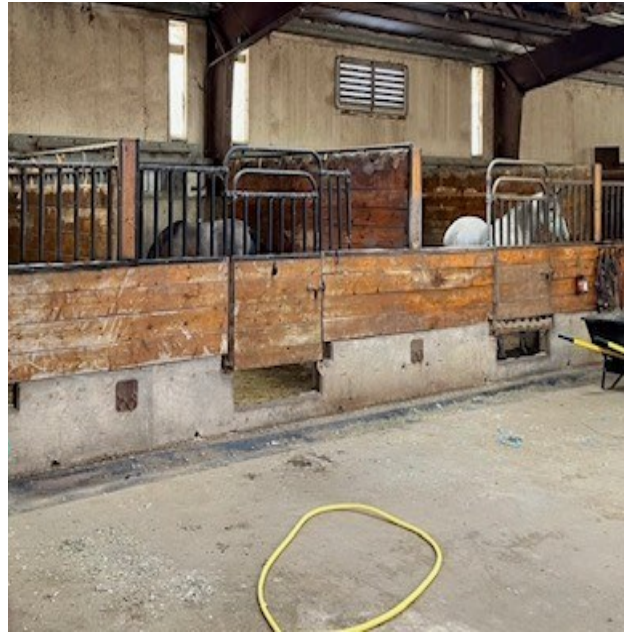
ROOSTER AG' REALTY

1100 S. County Line Rd
 PO Box 297
 Maple Park, IL 60151



JOE LUDWIG

Broker
 Email: roosteragrealty.com
 Phone: 630.774.5887



ROOSTER AG' REALTY
1100 S. County Line Rd
PO Box 297
Maple Park, IL 60151



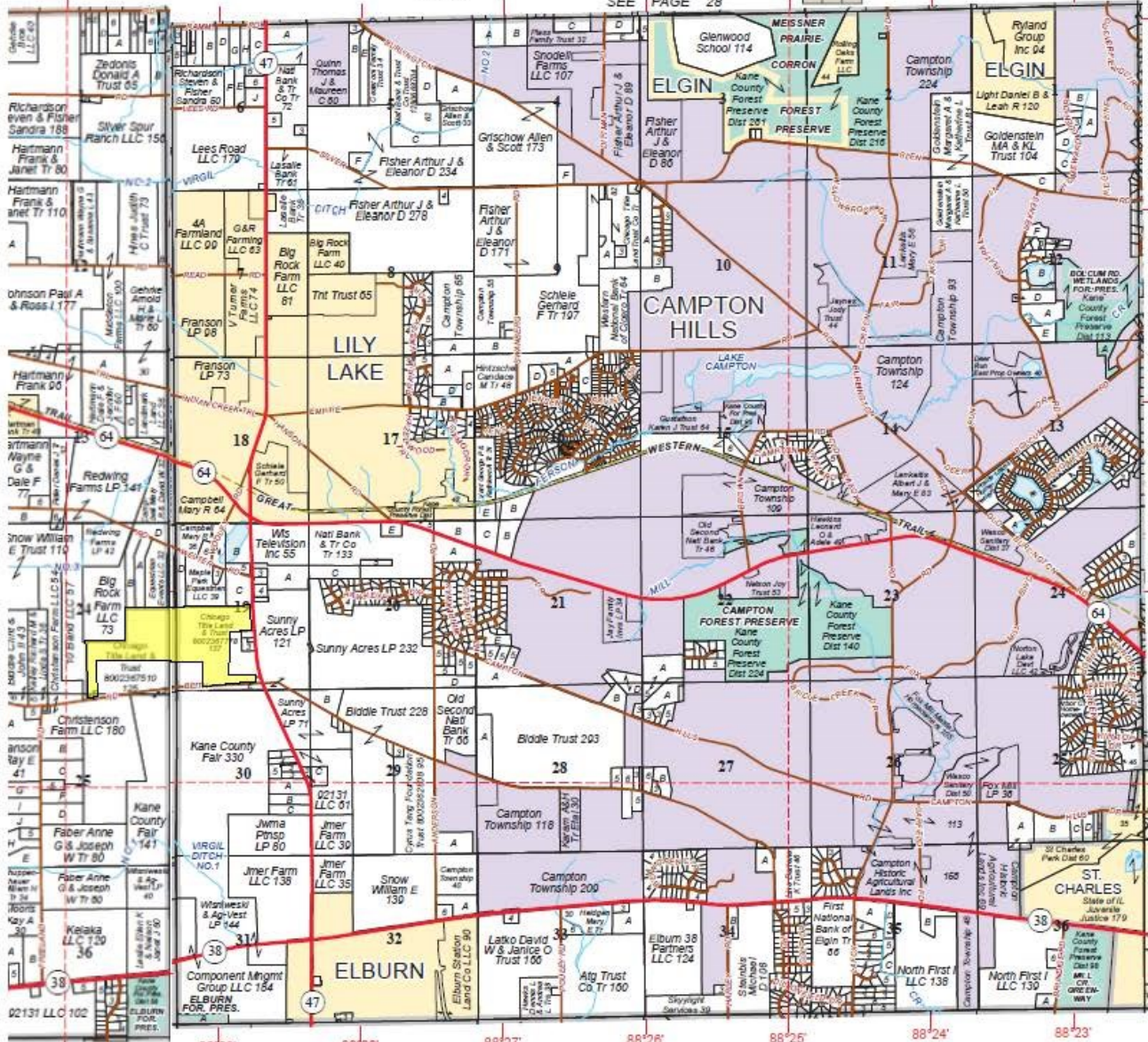
JOE LUDWIG
Broker
Email: roosteragrealty.com
Phone: 630.774.5887

See 42 for keyed parcels

Refer to page 43 for keyed parcels

J.-R.6E.CAMPTON WEST ST. CHARLES T.40N.-R.7E.

SEE PAGE 28

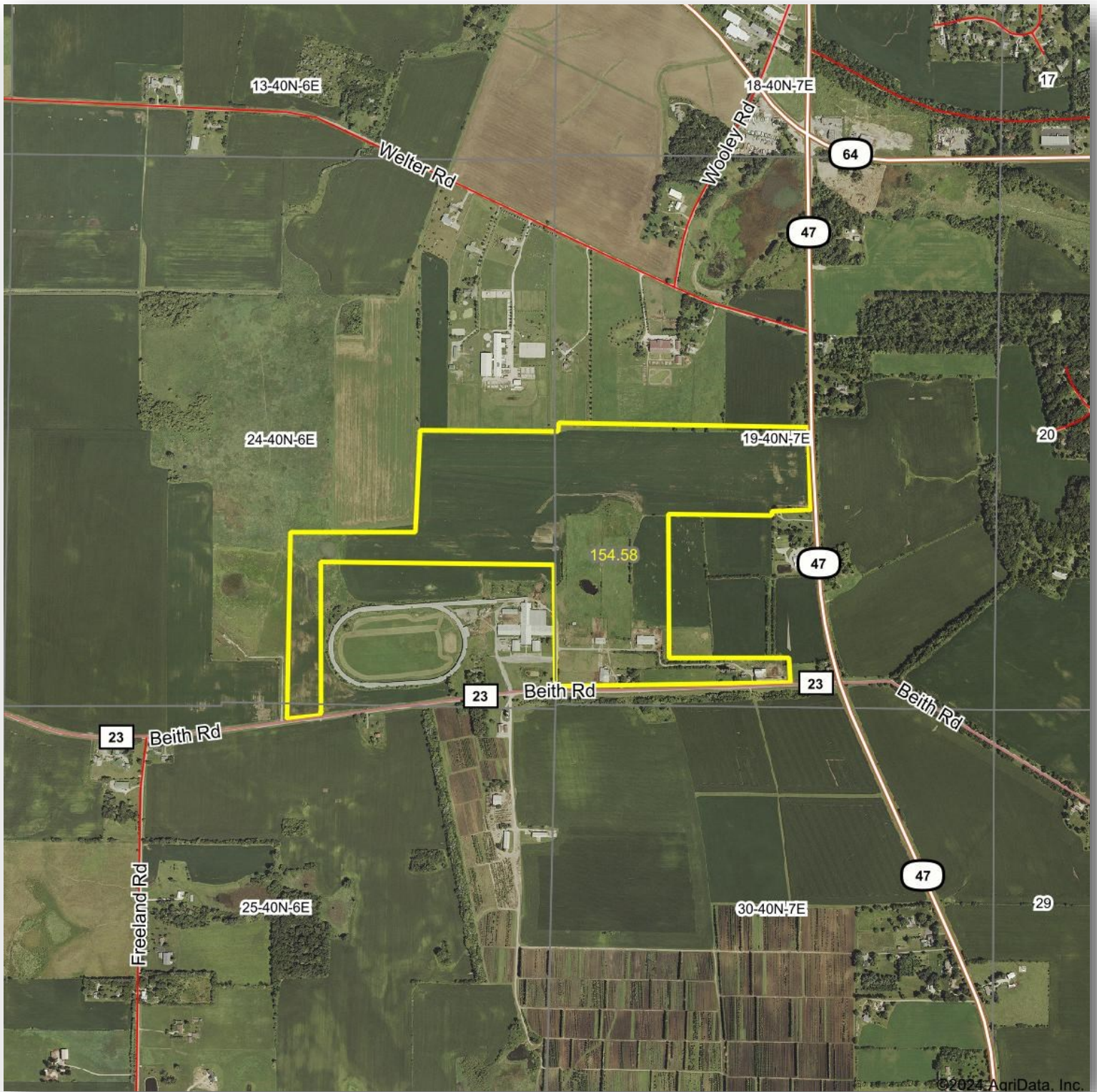


© 2020 Rockford Map Publs., Inc. SEE PAGE 16 Kane County, IL
 45W 44W 43W 42W 41W 40W 39W

ROOSTER AG' REALTY
 1100 S. County Line Rd
 PO Box 297
 Maple Park, IL 60151



JOE LUDWIG
 Broker
 Email: roosteragrealty.com
 Phone: 630.774.5887



©2024 AgriData, Inc.

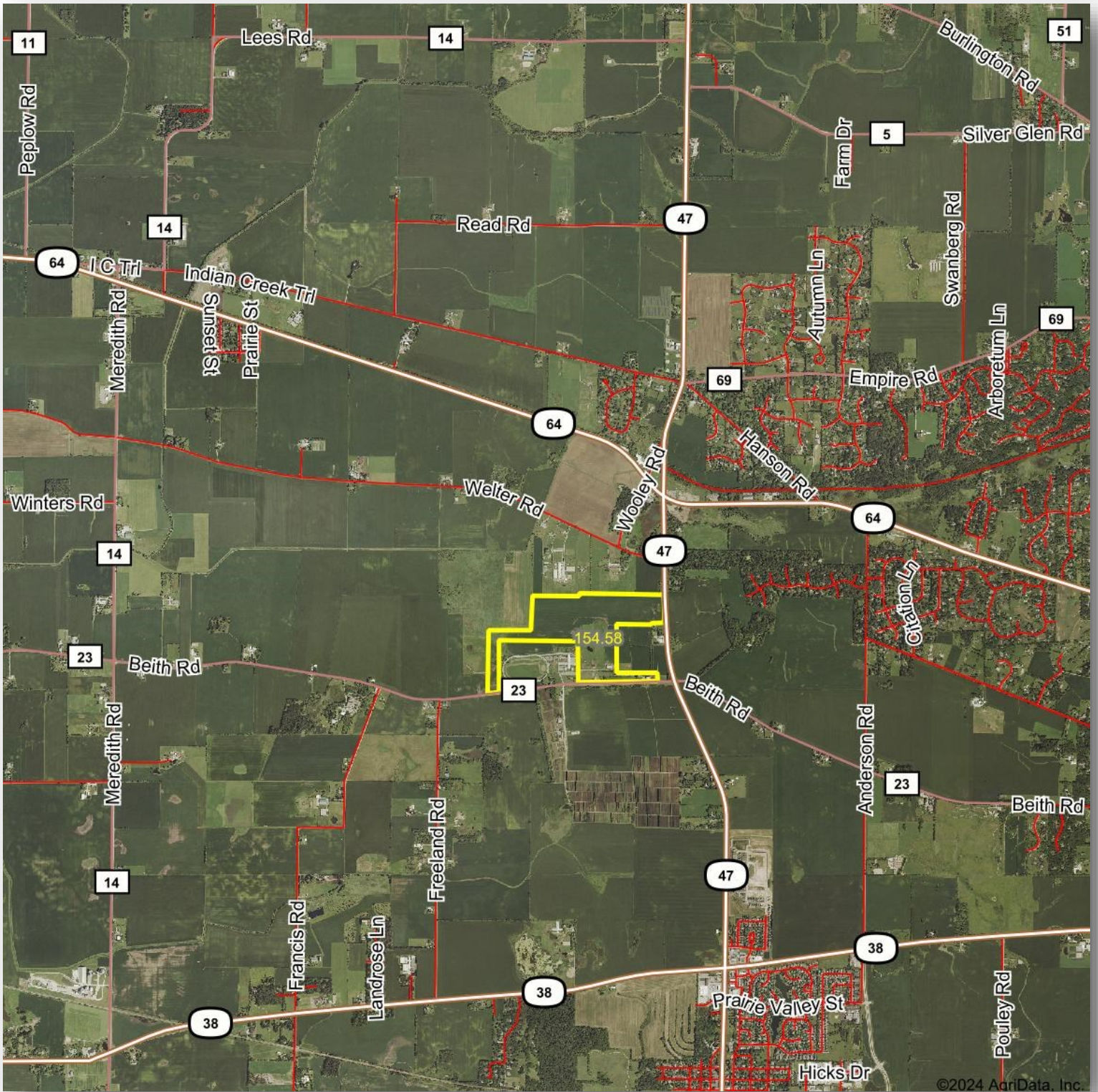
ROOSTER AG' REALTY

1100 S. County Line Rd
PO Box 297
Maple Park, IL 60151



JOE LUDWIG

Broker
Email: roosteragrealty.com
Phone: 630.774.5887



ROOSTER AG' REALTY

1100 S. County Line Rd
 PO Box 297
 Maple Park, IL 60151



JOE LUDWIG

Broker
 Email: roosteragrealty.com
 Phone: 630.774.5887



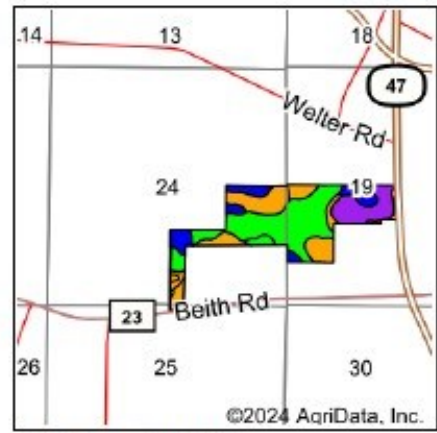
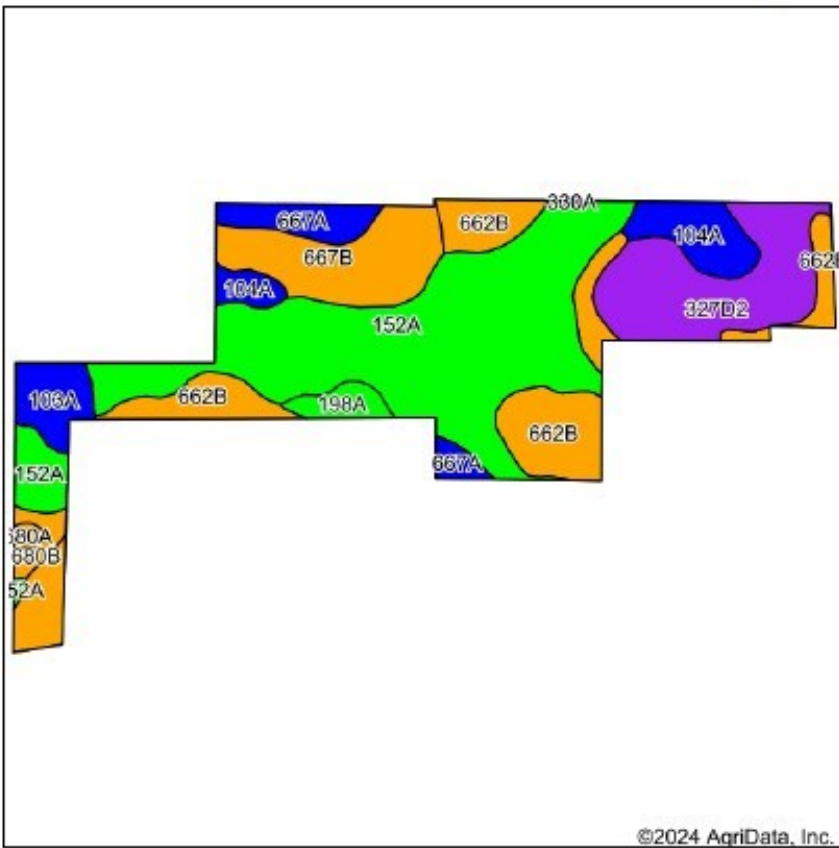
ROOSTER AG' REALTY

1100 S. County Line Rd
PO Box 297
Maple Park, IL 60151



JOE LUDWIG

Broker
Email: roosteragrealty.com
Phone: 630.774.5887



State: Illinois
 County: Kane
 Location: 24-40N-6E
 Township: Virgil
 Acres: 130.58
 Date: 3/27/2024



Soils data provided by USDA and NRCS.

©2024 AgriData, Inc.

Area Symbol: IL089, Soil Area Version: 17

Code	Soil Description	Acres	Percent of field	Il. State Productivity Index Legend	*Corn Bu/A	*Soybeans Bu/A	*Crop productivity index for optimum management
**152A	Drummer silty clay loam, 0 to 2 percent slopes	52.10	39.9%	Green	**195	**63	**144
**662B	Barony silt loam, 2 to 5 percent slopes	24.73	18.9%	Orange	**170	**52	**124
**327D2	Fox loam, 6 to 12 percent slopes, eroded	18.04	13.8%	Purple	**134	**43	**98
**667B	Kaneville silt loam, 2 to 5 percent slopes	12.94	9.9%	Blue	**176	**54	**127
104A	Virgil silt loam, 0 to 2 percent slopes	7.68	5.9%	Blue	182	56	132
667A	Kaneville silt loam, 0 to 2 percent slopes	5.55	4.3%	Blue	178	55	128
103A	Houghton muck, 0 to 2 percent slopes	4.71	3.6%	Blue	175	57	130
198A	Elburn silt loam, 0 to 2 percent slopes	2.41	1.8%	Green	197	61	143
**680B	Campton silt loam, 2 to 5 percent slopes	1.79	1.4%	Orange	**162	**50	**118
680A	Campton silt loam, 0 to 2 percent slopes	0.57	0.4%	Orange	164	50	119
**330A	Peotone silty clay loam, 0 to 2 percent slopes	0.06	0.0%	Orange	**164	**55	**123
Weighted Average					177.2	56	129.8

Table: Optimum Crop Productivity Ratings for Illinois Soil EFOTG are sourced from Bulletin 811 calculated Map Unit Base Yield Indices, and adjusted (Adj) for slope, erosion, and surface texture. Publication Date: 02-08-2023

Crop yields and productivity (B811 EFOTG) are maintained at the following USDA web site: 2023 Illinois Soil Productivity and Yield Indices:

<https://efotg.sc.egov.usda.gov/#/state/IL/documents/section=2&folder=52809>

* The flood/bond factor has been removed for B811 indexes and yields.

ROOSTER AG' REALTY

1100 S. County Line Rd
 PO Box 297
 Maple Park, IL 60151



JOE LUDWIG

Broker
 Email: roosteragrealty.com
 Phone: 630.774.5887